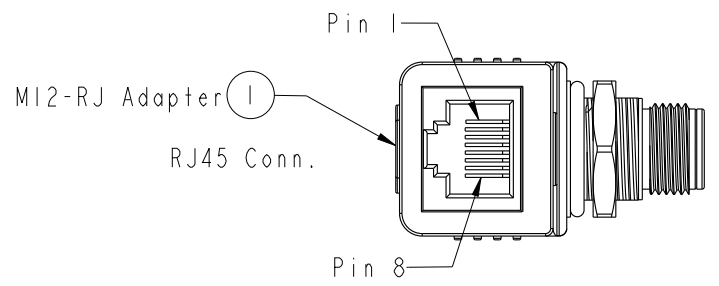
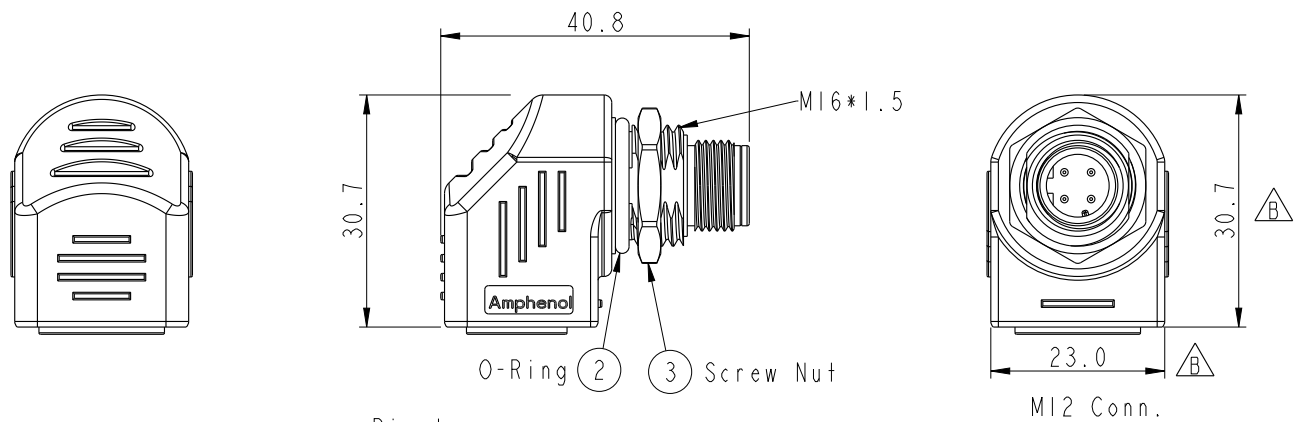
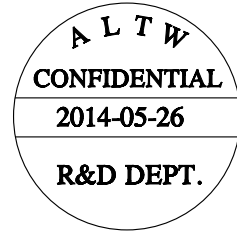
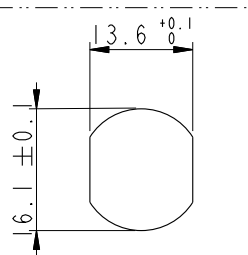
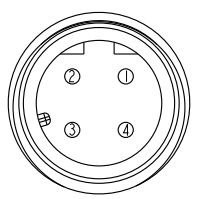


THIS DOCUMENT IS SUBJECT TO CHANGE WITHOUT NOTICE. IT IS CONFIDENTIAL AND A PROPERTY OF AMPHENOL LTW. DISCLOSURE TO THIRD PARTY HAS TO BE AUTHORIZED BY AMPHENOL LTW.

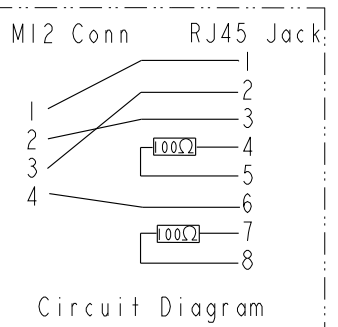
REV.	ECN NO.	DATE	SIGN	DESCRIPTION
A		2013-02-04	Lu Di	Change Rev.01 To Rev.A
B	LE31350019	2013-04-22	Lu Di	Update The Dimensions
C	LE31460012	2014-05-26	Tony_leng	Change O-Ring



Pin Assignments  
Front View



M12 Recommended  
Panel Cut-Out



Circuit Diagram

- Note:
- \*  $\varnothing$  Important Dimension
  - \* Waterproof Rate: IP65(MOLDING)
  - \* Waterproof Rate: IP68(MI2)  
(Under Water 1M 24 hours)
  - \* Pin: Copper Alloy, Gold Plated
  - \* Nut: Zinc Alloy, Nickel Plated
  - \* Shield: Copper Alloy, Nickel Plated
  - \* O-Ring: Silicone, UL94V-0, Gray.
  - \* Jack: PBT, Black.
  - \* Housing: Nylon+GF, Black.
  - \* Panel Thickness Max: 5.0mm

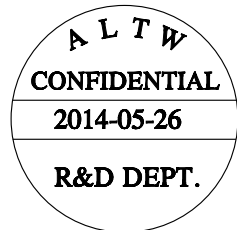
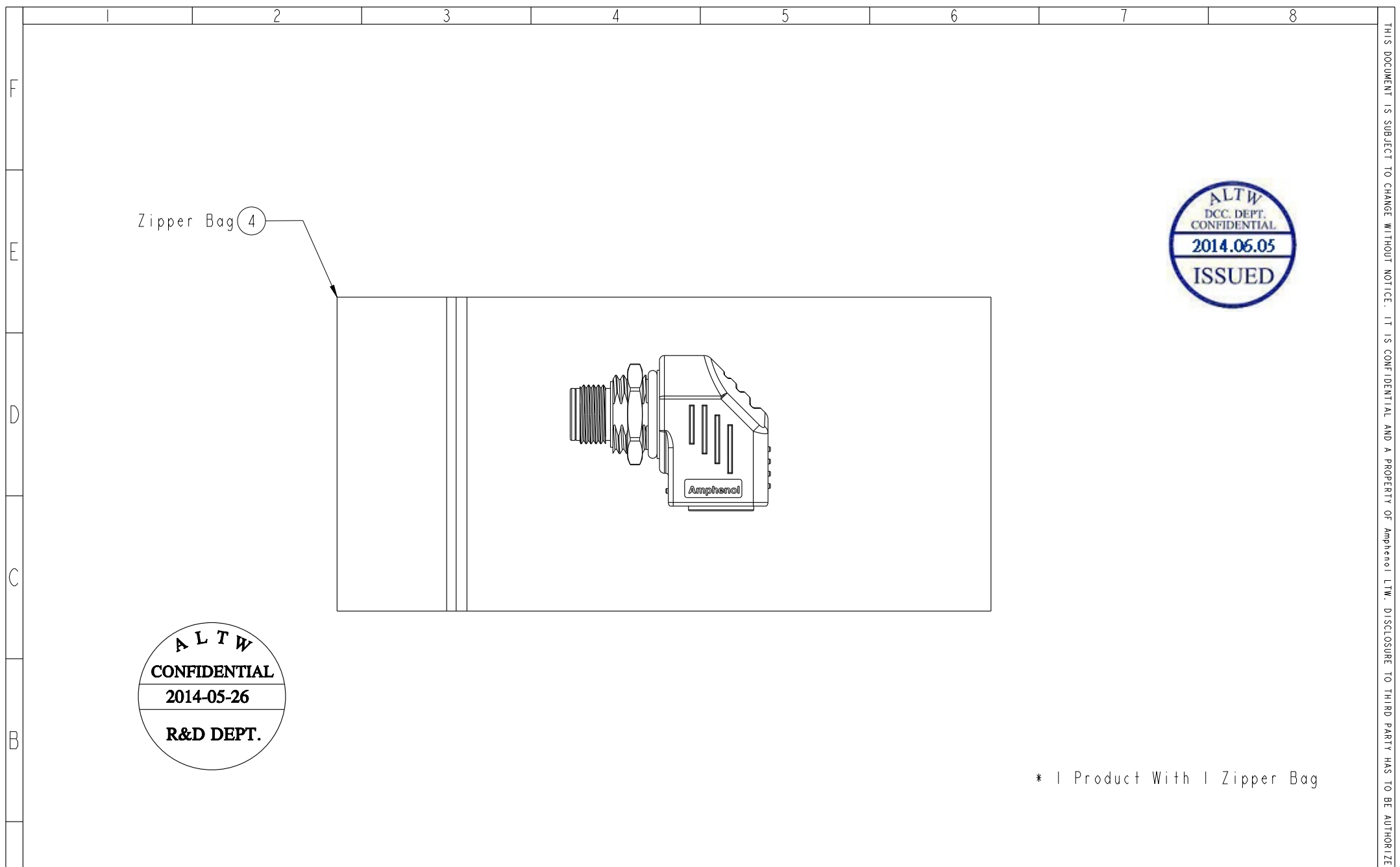
UNIT: mm	
TOLERANCE	$\pm 0.5\text{mm}$

TITLE ADAPTOR, SHIELDED M12 D CODE TO RJ45			
SCALE 1:1	SIZE A4	SHEET 1 OF 2	
REV. C	WC-REV. B.2	$\varnothing$ Inspection item	

**Amphenol LTW**  
安費諾亮泰企業股份有限公司

ITEM NO. RJS-12D04FM-RS8001	DRAWN BY Tony_leng	DATE 2014-05-26
DWG NO. RJS-12D04FM-RS8001	CHECKED BY Jimmy	DATE 2014-05-26
CUSTOMER ALTW	APPROVED BY Jo-anne	DATE 2014-05-26

THIS DOCUMENT IS SUBJECT TO CHANGE WITHOUT NOTICE. IT IS CONFIDENTIAL AND A PROPERTY OF Amphenol LTW. DISCLOSURE TO THIRD PARTY HAS TO BE AUTHORIZED BY Amphenol LTW.



\* 1 Product With 1 Zipper Bag

A	UNIT:mm			TITLE ADAPTOR, SHIELDED M12 D CODE TO RJ45		ITEM NO RJS-12D04FM-RS8001	DRAWN BY Tony_leng	DATE 2014-05-26
	TOLERANCE ±0.5mm			SCALE 1:1	SIZE A4	SHEET 2	CHECKED BY Jimmy	DATE 2014-05-26
				REV. C	WC-REV. B.2	: Inspection item	CUSTOMER ALTW	APPROVED BY Jo-anne
				<b>Amphenol LTW</b> 安費諾亮泰企業股份有限公司				